



ETTER+RAMLI 

Dedicated Independent NetSuite Managed Success

AI Agents in NetSuite Redefining the Future of ERP for Business Leaders

Written by:
Todd Kimpton

Executive Summary

In a rapidly evolving digital landscape, AI agents are poised to transform how businesses operate within NetSuite environments. This white paper explores the strategic integration of AI agents, their impact on business operations, and the essential preparations needed to harness their potential effectively. Designed for business leaders, particularly those with finance or technology backgrounds, this document provides insights into future-proofing your ERP systems against the backdrop of AI advancements.

Introduction

As the digital transformation journey continues, artificial intelligence (AI) emerges as a key driver of change within enterprise resource planning (ERP) systems. AI agents in NetSuite are not just tools; they are digital colleagues capable of executing complex tasks with precision and efficiency. This transition represents a significant shift in how organizations manage their ERP environments, offering unprecedented opportunities for enhanced productivity and strategic insights.

The Future is Digital: Meet Your Next NetSuite Hire

Imagine starting your workweek with AI agents that autonomously manage vendor bills, alert teams to potential issues, and prepare financial forecasts. This scenario is not a distant future but an imminent reality. AI agents will soon be integral to NetSuite, performing tasks traditionally managed by human employees but with greater speed, cost-efficiency, and scalability.



The successful integration of AI agents requires more than just technological upgrades. It demands a robust strategy encompassing data quality, system cleanliness, and strong administrative governance. AI agents will inherit your existing system conditions, making it crucial to ensure your NetSuite environment is optimized for AI functionality.

Three Pillars of AI Readiness

1. Data Quality

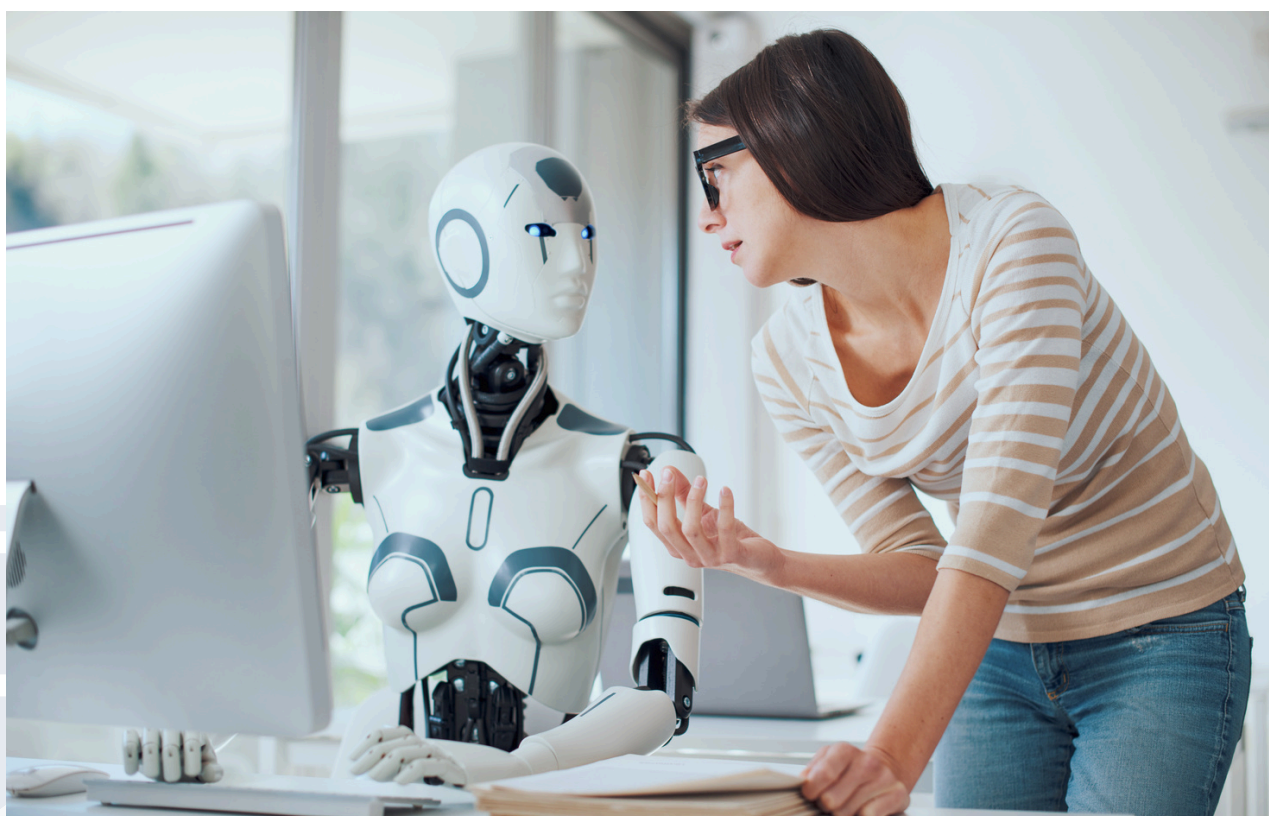
- High-integrity data is crucial for AI efficiency. Poor data quality increases the risk of errors.

2. Clean Systems

- A well-maintained NetSuite environment ensures scalable and consistent AI operations.

3. Strong Administration

- Effective governance of roles, permissions, and workflows is essential for AI success.



Roles, Permissions, and KPIs: The Anatomy of AI Agents

AI agents are more than automated scripts. They require clearly defined roles and permissions to operate effectively. This involves setting accurate workflows and establishing key performance indicators (KPIs) to measure success. Properly structured, AI agents can enhance business processes and provide significant strategic value.

Real Tasks for Real Gains: Practical Applications of AI Agents

AI agents can perform a range of tasks across finance, supply chain, and sales operations. From reconciling bank transactions to predictive inventory management, AI agents can transform routine operations into strategic advantages, providing insights that drive decision-making.

Managing Your AI Workforce: Oversight, Ethics & Guardrails

While AI agents offer numerous benefits, they also present risks if not properly managed. Over-permissioning can lead to operational errors, while a lack of auditability can undermine trust. Establishing clear thresholds, approval processes, and ethical guidelines ensures AI operates within safe and effective parameters.

Cultural Shift: Reskilling, Redesigning, and Rethinking Teams

AI integration requires a cultural shift within organizations. As AI assumes repetitive tasks, human roles will evolve towards more strategic functions. Reskilling initiatives and organizational redesigns are essential to ensure teams can effectively collaborate with AI agents.



Roadmap to AI-Driven ERP: Strategic Steps for Success

Preparing for AI in NetSuite involves three key stages:

1. Clean House

- Ensure data accuracy, workflow documentation, and clear role definitions.

2. Redesign the Team

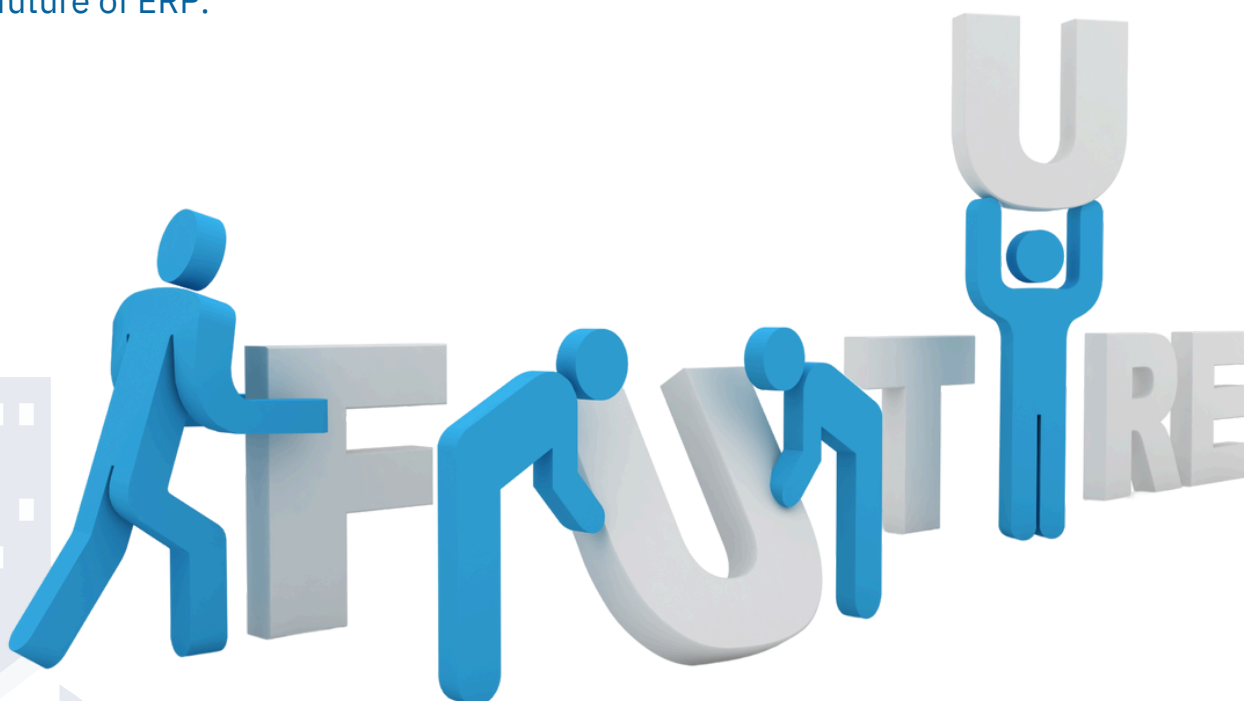
- Shift roles from task execution to process governance.

3. Deploy with Intelligence

- Integrate AI into daily operations, focusing on strategic enablement rather than mere automation.

Conclusion: Building for the Future

AI is not just a technological upgrade; it's a capability that requires careful preparation and strategic implementation. As AI agents become more prevalent, businesses that proactively prepare their systems and teams will gain a competitive edge. At **Etter+Ramli**, we prioritize the integration of AI in NetSuite through our Managed Success model, ensuring your business is ready for the future of ERP.



Etter+Ramli (E+R) is a leader in NetSuite Admin Managed Services, providing a proactive, structured approach to ERP management. Our Managed Success model optimizes NetSuite for operational efficiency and future innovation, including AI integration.

The Managed Success Model

E+R goes beyond traditional ERP support with continuous optimization, automation, and strategic advisory services. We help businesses maximize their NetSuite investment, reducing risks and enhancing agility.

Future-Proofing Through Innovation

We integrate AI-driven insights and emerging technologies to ensure clients' NetSuite environments remain adaptable to future advancements, enabling seamless adoption of new capabilities.

A Partner in Long-Term Success

As a strategic partner, E+R provides expert NetSuite management to support evolving business needs, ensuring ERP systems drive efficiency, innovation, and competitive advantage.

Join the Future of ERP Management

E+R empowers businesses with optimized, future-ready NetSuite environments. Discover how our Managed Success model can drive strategic value for your business today.

